



**SMART SOLUTIONS FOR  
THE LABELING INDUSTRY**

## GEMINI - DIGITAL FINISHING SYSTEM FOR SHEETS



The Gemini is an automatic sheet feeding and cutting system designed to automatically load and cut without the need of an operator.

Equipped with a Graphtec CE7000-40 Plotter, cuts can be made on adhesive sheets, silk screen prints, shop material prints and digital prints on cardboard.

With a newly designed ramp style loading tray and a wheel system, sheets can automatically be loaded into the plotter interruption free, cut, then dispensed into the catch tray all with ease.



**LABEL  
SHEETS**



**SMALL  
BOXES**



**TAGS  
AND MORE**

This plotter is equipped with integrated sensor reader to assist in reading the marks after each sheet is loaded all within a fraction of a second.

This is done while working in tandem with the cutting management software resulting with a cut precision of 0.3mm.

The cutting parameters can be adjusted using the cutting management software included, giving the user a simple and smart way to operate the unit.



## TWO DIFFERENT POSITIONS OF CUTTING.

The standard position is used for kiss cutting labels. The second position is used to break through the media to create small packs, tags and more.

# SMART SOLUTIONS FOR THE LABELING INDUSTRY

## GEMINI - DIGITAL FINISHING SYSTEM FOR SHEETS



This innovative desktop cutter is capable of handling a variety of thickness and sheet sizes such as A4, A3, SRA3, Letter, Tabloid and Tabloid Extra up to 35 x 50cm (13.77" x 19.68").

It also has the ability to do Perforation cuts (Small dots), Kiss cuts (Half cuts), and Die cuts (Heavy cuts) for applications such as labels, business cards, shaped business cards, small boxes and more.

It can successfully cut cardboard with a weight ranging from 200 to 350 gr (7.05 to 12.35 ounces).



Output collection tray

### SPECIFICATIONS

#### Auto sheet capacity:

Average 150 sheets - with auto feeder

#### Media width (min-max):

210 - 350mm (8.25" - 13.77")

#### Media length (min-max):

279 - 500mm (11.69" - 19.68")

#### Interface & Software:

Cutting Manager Software (Win XP up) cutter management tool

#### Registration system:

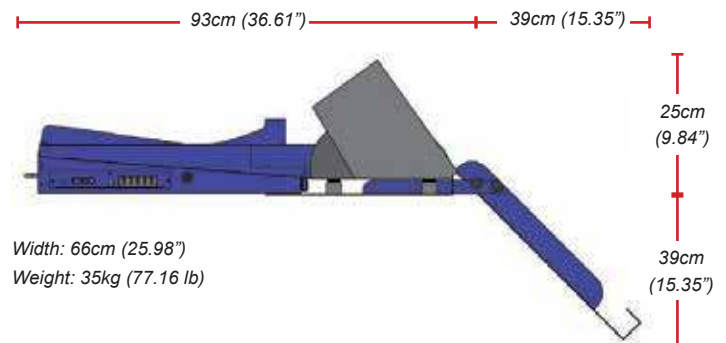
The sensor reader equipped onto the cutting head detects the marks on the media, and compares the position with the original value from the digital file. Gemini software then acts accordingly to correct the linear and angular positional differences but automatically adjusting the cut lines

#### Synchronization method:

Two or four registration marks

## KEY FEATURES:

- » Work with Vector PDF (Illustrator or CoreDraw)
- » Compact design making it a desktop solution for a smaller workplace.
- » Automatic Ramp Style Feeder tray providing operator free job runs.
- » Proprietary software ensuring precise loading and cutting with excellent results.
- » Holds up to 150 sheets per job using sheet sizes (A4, A3, SRA3, Letter, Tabloid and Tabloid Extra).
- » Cutting options include: Die-Cut, Kiss-Cut, Perforation Cut and Media Creasing for boxes.



Control panel



Hub USB integrated



Magnetics guides

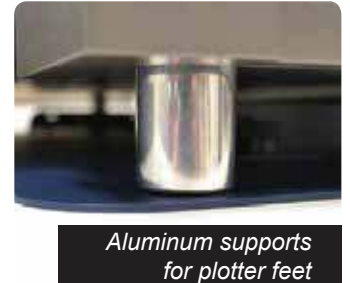


## EASY TO MOVE

Gemini is equipped with two handles that allows you to easily move the machine.



Tray fixing



Aluminum supports for plotter feet

## ADAPTER FOR A4/LETTER

For A4 and letter format we have created an adapter that keeps the sheets perfectly aligned in the right position.



In order to guarantee a perfect alignment between feeder, plotter and output tray, a custom baseplate is included with the assembly ensuring accurate sheet loading for a successful job.

Small packaging

## NO MORE SIMPLE BOXES

With this newer version of the Gemini, we have perfected the art of cutting small boxes.

We're making it much easier to perform real creases along with the classic half-cut using a creasing tool. This is a real plus for an increasingly high-performance finisher.

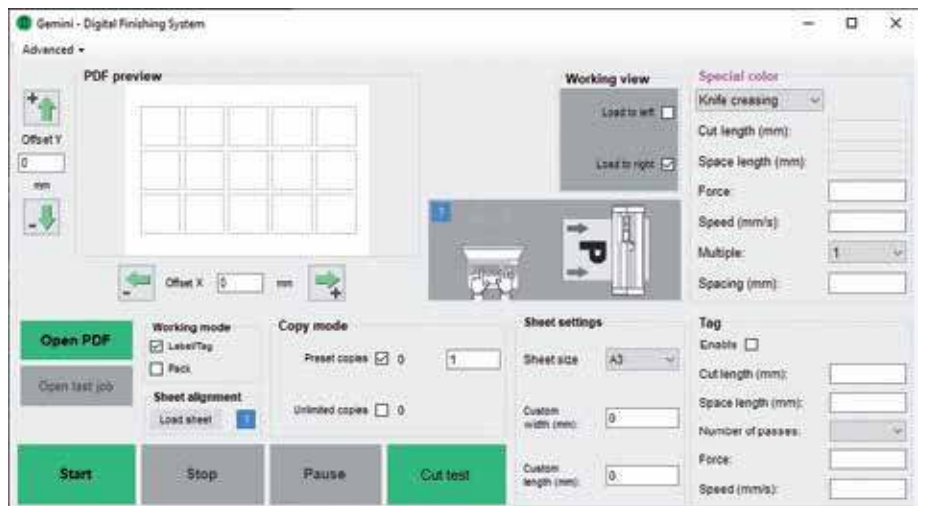
Tags

Label sheets

## GEMINI CUTTING MANAGER

The Gemini Cutting Manager is our own proprietary software that will allow you to cut lines and paths of a pdf vector graphics.

There are additional functions enabling the management of die cutting sheet material, using cross cut (Cut through) and dashed cut features, so that greeting cards, POS and packaging board material may be also cut.



**CONTACT US NOW TO SEE THEM IN ACTION OR FOR SAMPLES & COSTINGS**



-  labels
-  thermal printers
-  digital printers
-  support

**QLM Label Makers Pty Ltd** ABN 46 009 710 614  
**Head Office** PO Box 512 Acacia Ridge LPO QLD 4110  
**p** 1300 792 782 **e** qlm@qlm.com.au

**Label Print Systems Pty Ltd**  
**Showroom** 1 Australand Drive, Berrinba QLD 4117  
**p** 1800 113 904 **e** sales@labelprintsystems.com.au

[qlm.com.au](http://qlm.com.au) [labelprintsystems.com.au](http://labelprintsystems.com.au)